

## Tape up a cut

For this job you need a patch (in right size and material) and our adhesive. Also you need these tools: scissors, a brush and a pencil.

To fix a cut permanent and watherproof, you should clean your roof of oil, fat, dirt etc. (pic no1)



Now tailor your patch in the right width and length.  
(Cut corners rounded) (pic no2)



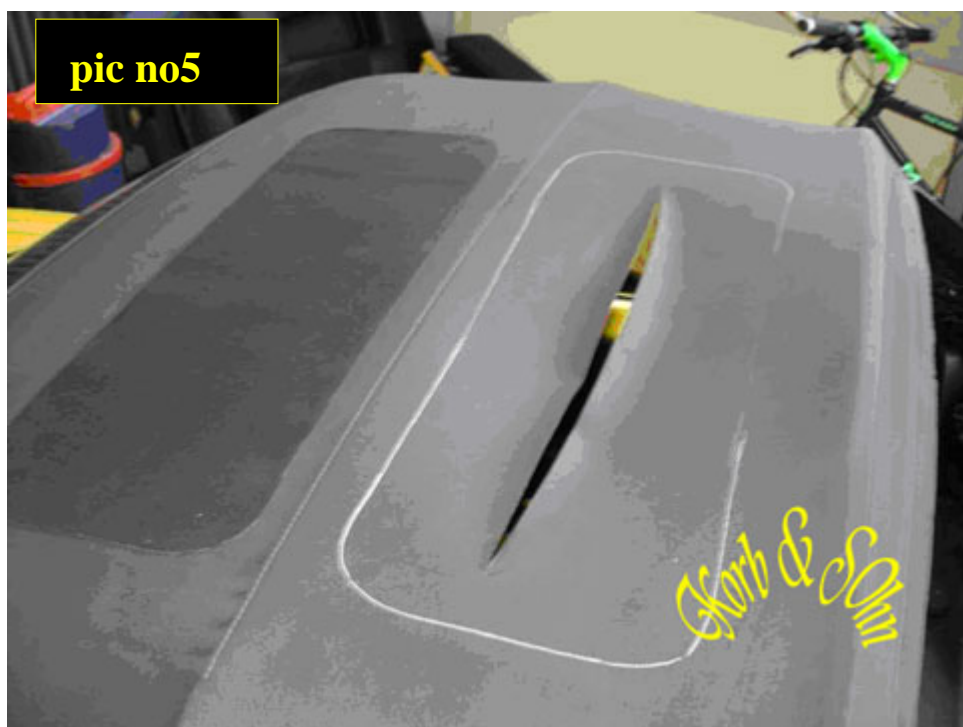
The patch have to be 1.5 inches bigger than your cut (pic no3)



Now mark the position of your patch were you'll tape it (Use chalk or a pencil)  
(pic no4)



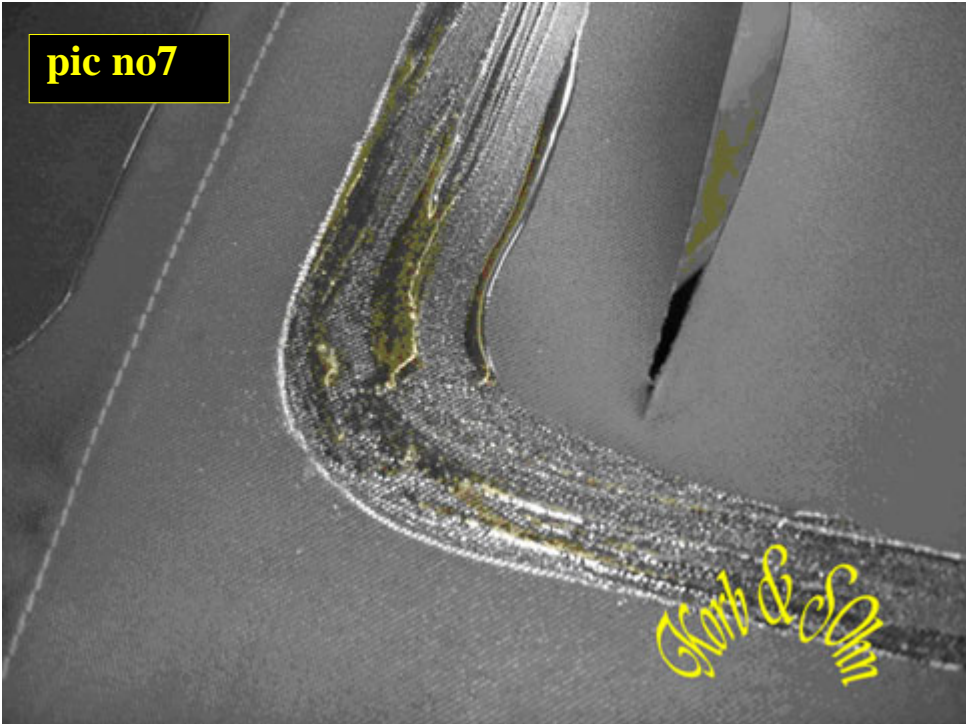
Now it's clearly were to work (pic no5)



Apply in the inner edge of the marked border the adhesive (pic no6)



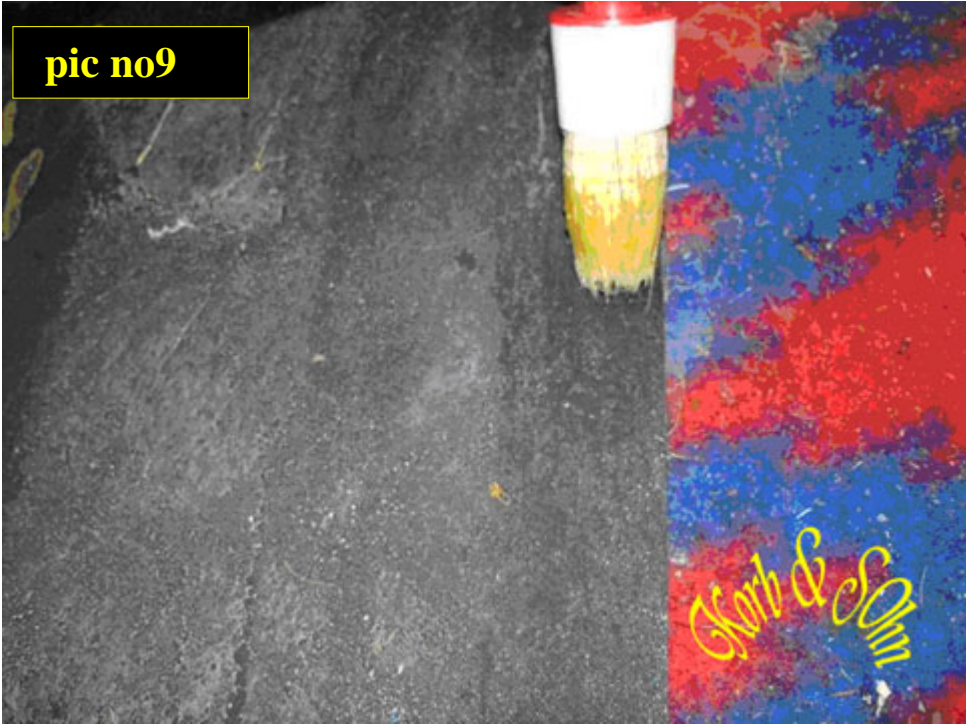
Note that the whole area have to be without gaps smeared (pic no7)



Use a brush for this job.(pic no8)



Use the last steps as same on the patch. (pic no9)



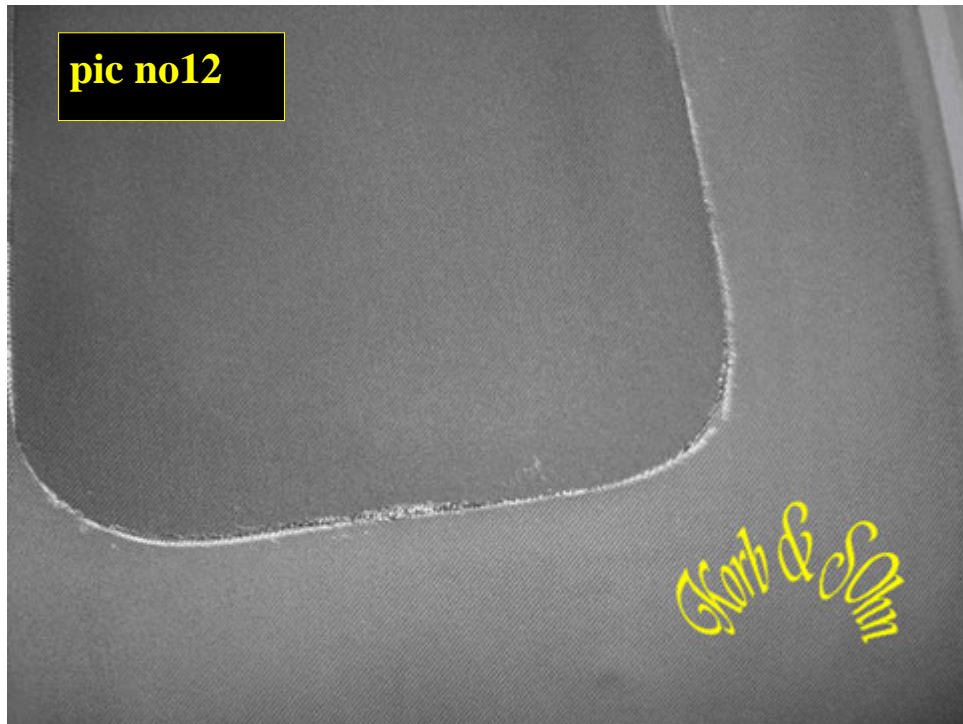
Open your roof about 1-2in. to release the tension. (pic no10)



Wait about 5 min. The adhesive should be handdry.  
If true, stick the patch on the marked area (pic no11)



**Smooth out the patch. Move just from one side (pic no12)**



**After about 2 hour you can close your roof.**

**With this instruction you can also patch form inside. (to hide the patch)**

**For insidepatching check for if the area is free from bars or linkage.**

**All instructions are just a guide.**

**Some time it's better to relate an expert.**